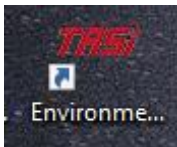


Stepwise Procedure TA612C

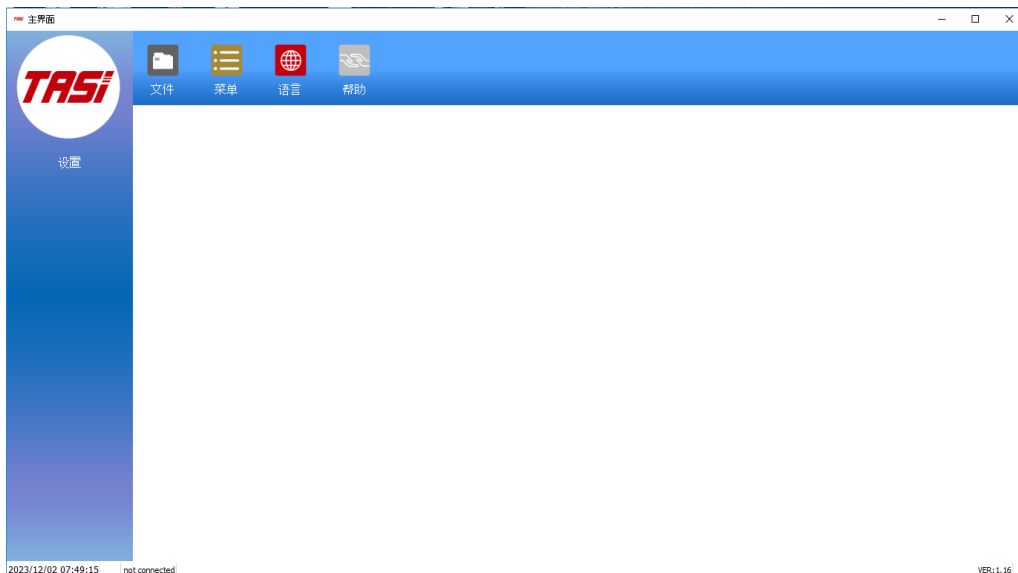
1. Install Software on your Desktop PC or Laptop
2. Plug-in thermocouples in your device



3. Connect your device TA612C with your desktop PC or Laptop with the USB data cable.
4. Double Click on TASI shortcut icon on your desktop.



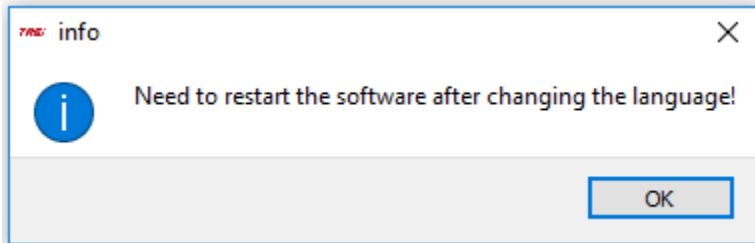
5. The following interface will be displayed



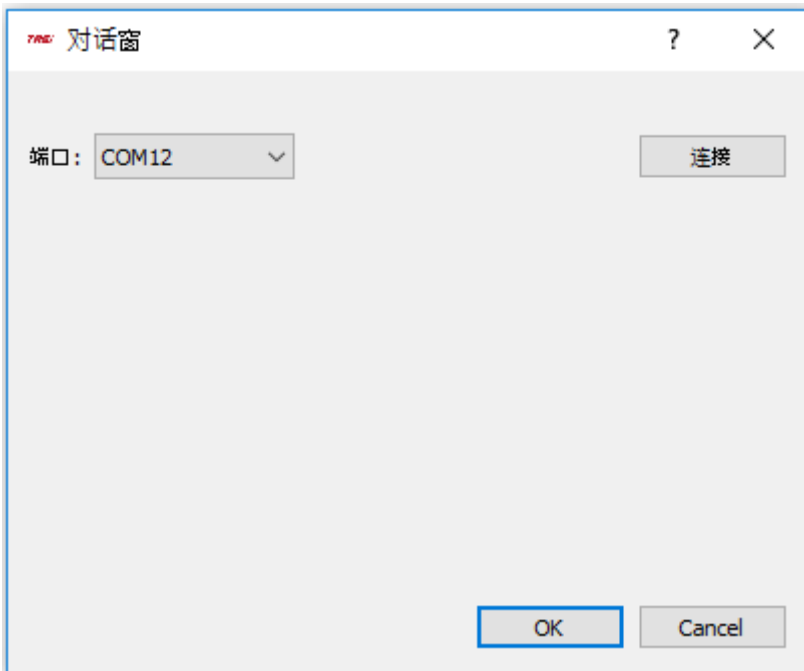
6. Click on world icon to change language in English



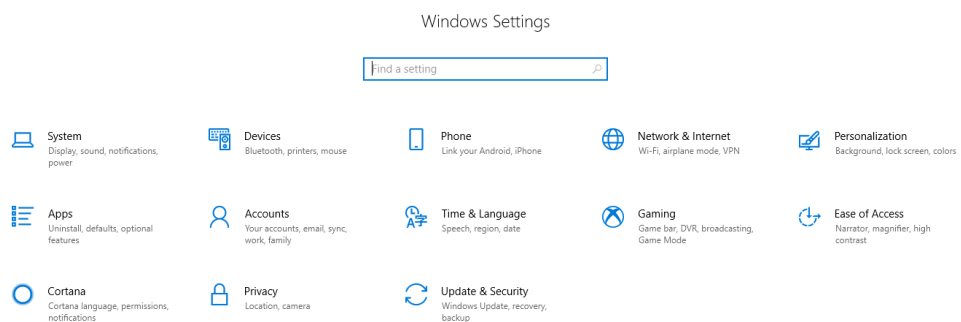
7. The following pop-up window will be displayed



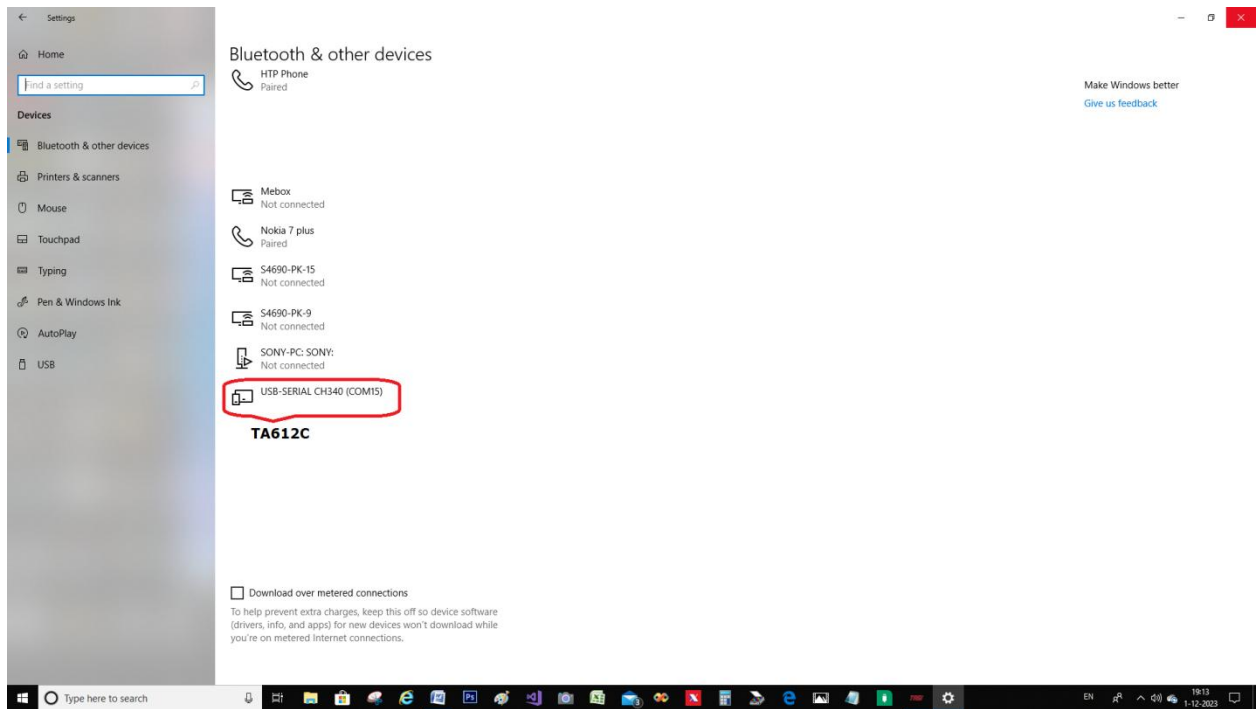
8. Ignore this and Click on OK button. You will see the following window.



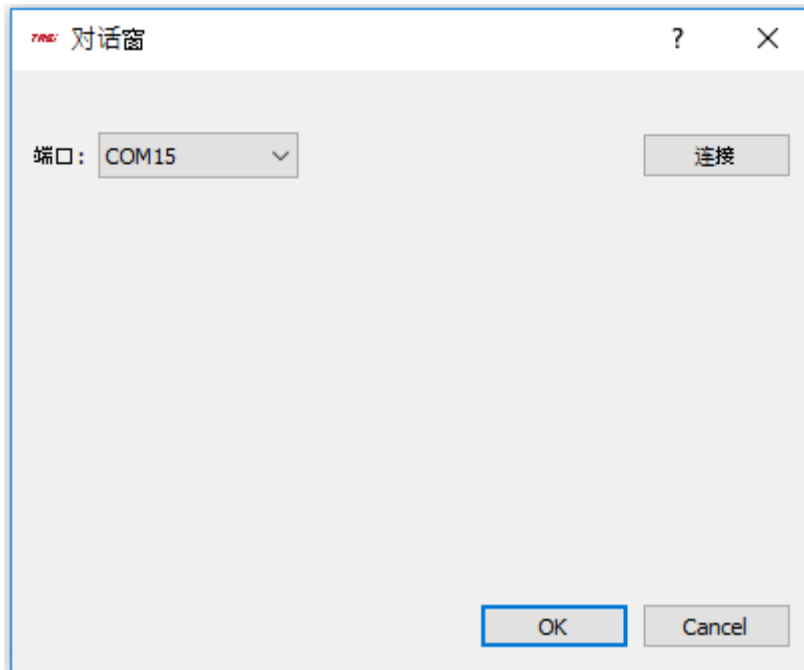
9. Here we see COM12 but on your PC or Laptop this may be different. Now here we have to give the value of TA612C USB COM port number. To find the TA612C USB COM port number go to Windows Settings → Devices



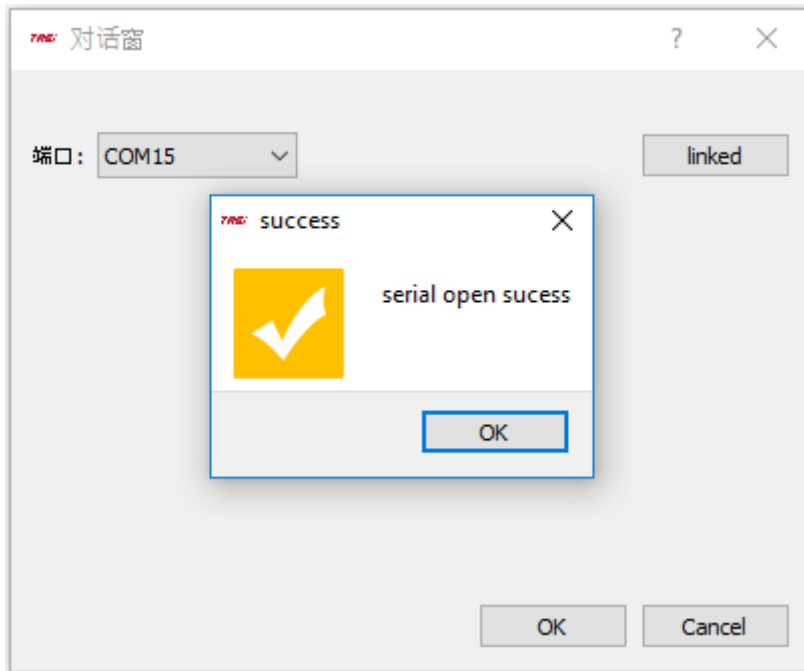
10. Here you will see the following window. We have made callout to identify the TA612C COM port number. Here we find out that TA612C COM port number is 15



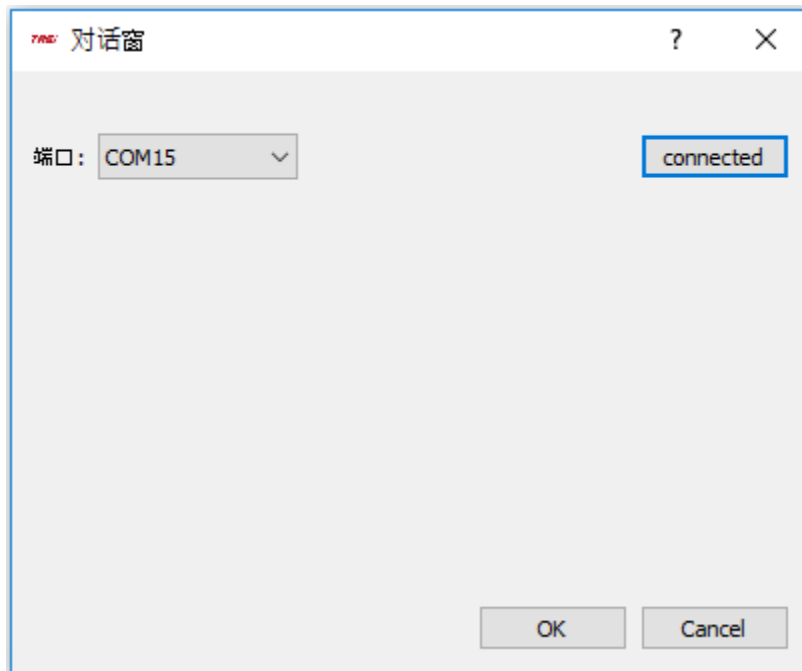
11. Now we go back on TASI software interface and set the correct value of COM port which is in our case is 15.



12. After this we will click on right side TAB which is in Chinese. Doing this following window will be displayed.



13. Click on OK button. You will see **linked** text will be changed in **connected** text



14. Click on OK button. You will see TASI software interface with all information of data will be displayed. In addition, you will see **not connected** text in the bottom of previous window of serial number will change in **connected**. Now all hardware settings are completed and your Data Logger TA612C is ready to measure the data.

MainWindow

TASI

file menu language help

Start
pause
upload
Data clear
Printing

Date	CH1	CH2	CH3	CH4

Temperature

set
°C
°F

1min

up overrun count	down overrun count	MAX	MIN	AVG
channel 1	channel 1	channel 1	channel 1	channel 1
channel 2	channel 2	channel 2	channel 2	channel 2
channel 3	channel 3	channel 3	channel 3	channel 3
channel 4	channel 4	channel 4	channel 4	channel 4

2023/12/02 08:48:50 connected VER:1.16

End